

**ZF** ZIERER®  
facade-systems  
robust durable versatile



**Design**  
in form and colour

Fiberglas facade  
systems

**ENERGY-SAVING**

**ECO-FRIENDLY**



# Cladding refurbishments with ZF Zierer systems!



## SAVING ENERGY

**Facade refurbishment comes before heat pumps!!!**

- **FINANCIAL CRISIS!** – Insecure financial investments?
- **RISING ENERGY COSTS!** – High heating costs?
- **CLIMATE CRISIS!** – High CO<sub>2</sub> emissions?

**The solution to these problems: ZF Zierer facade systems!**

**Heat is expensive!**



Copyright-Vermerk: KfW-Bildarchiv /  
Rüdiger Nehmsow

## Contents

Sustainability .....	3
About Us / Philosophy .....	5
Slate texture .....	7
Ceramic texture .....	9
Brick texture .....	11
Natural stone texture .....	13
Rendered texture .....	15
Rounded slate texture .....	17
All the benefits of our facades at a glance .....	19
Installation guide .....	21



## SUSTAINABLE BUILDING ENVELOPE

Because they are constructionally separate elements, at the end of their life cycle the individual components of a ZF Zierer rainscreen ventilated facade can be separately disposed and recycled, thus returning them to the material cycle.

In insulated render systems, the insulation and facade skin are bonded together, so the only option is “thermal disposal”.



## ENERGY-SAVING

Over the years, a facade refurbished in accordance with the current Energy Saving Ordinance will pay for itself. Damp masonry will dry out with a rainscreen ventilated facade from ZF Zierer. Cracks are covered up, the building gets a new look.

**With full insulation, you can save up to 50% heating energy/CO<sub>2</sub>.** Furthermore, ZF Zierer products are completely recyclable, do not contain any asbestos and are free from halogens and cadmium, i.e. **ECO-FRIENDLY.**



## ECO-FRIENDLY

The resins that we use are produced in Europe. That ensures a reliable consistent high quality of these important components. Over 50% of mineral fillers, such as chalk, come from Germany. All the remaining materials from other European countries. European glass fibres are used to avoid long transport routes from Asia. So for **ZF ZIERER Facades** climate protection not only means the highest quality but also the careful use of valuable resources. The short intra-European transport routes ensure the lowest possible CO<sub>2</sub> emissions.

The durability and longevity of our products also stand for a careful approach to our environment and to sustainability.





**Design**  
in form and colour

---

fibreglas facade  
systems

## About us

For over 40 years, we have pursued the goals of quality and durability in the manufacture at the highest technical level of facade elements made from unbreakable fibreglass (glass fibre reinforced composite material). Millions of square metres have already been used and are giving walls a new look.

Our ventilated rainscreen facade system with professionally processed insulation materials is helping to save energy and thus contributes to a more positive CO<sub>2</sub> footprint.

## Our philosophy

### Technology

ZF Zierer products are manufactured from an impact and break-proof polyester fibreglass material. The raw material is dyed through and the end product is additionally surface-coated. ZF Zierer products are therefore ideally suitable for external cladding and extreme weathering. Over four decades of experience make ZF Zierer an expert in glass-fibre reinforced plastic (GRP). The longevity of the material has already proved itself for many decades in shipbuilding and aircraft construction.

### Quality assurance

The facade elements are available in fire protection classes DIN 4102 B II (normally flammable) and DIN 4102 B I (flame-retardant) and SBI D class on an European level. In order to achieve this excellent fire protection behaviour in accordance with DIN 4102 B I, GRP products are subject to constant monitoring by the Materials Testing Office NRW and the Institute for Building Technology Berlin (test mark PA-III 2.2166). This enables ZF Zierer products to be also used for the refurbishment of multi-storey residential buildings.

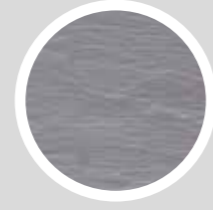
### Architecture

Architecture is and always has been the expression of contemporary construction. Innovative production processes have ensured that due to their excellent characteristics for residential and industrial building, plastics are attracting increasing attention in architecture, especially for the individual design of buildings. A ventilated rainscreen facade also provides a healthy and comfortable indoor climate.

## Slate texture



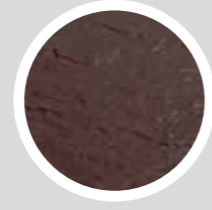
### Colours



Signal grey



Pastel grey



Brown



Stone grey



Grey beige



Anthracite

The texture facade element simulates a riven slate surface, and is universally applicable due to its geometrical shape. The result is a harmonious appearance, whether they are installed in a stacked or offset pattern.

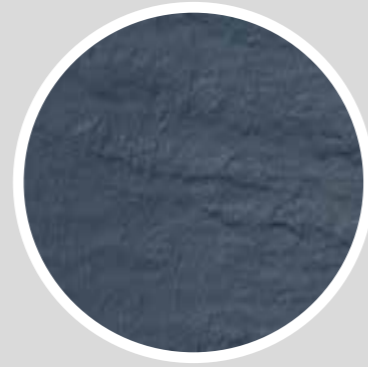


Slate texture - Grey beige

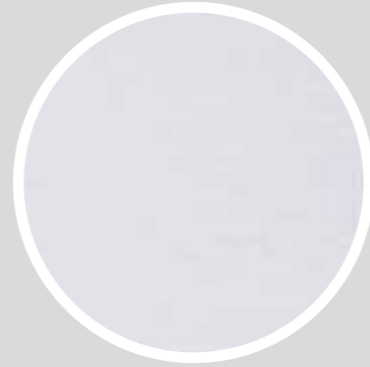
## Ceramic texture



### Colours



Anthracite



Pastel grey

The terra facade element is a lightweight alternative to small-format ceramic facades. The facade is characterised by clear shapes and is particularly suitable for the modern refurbishment of office and commercial buildings.

Due to its light weight, the product is easy to handle and quick to install on site.

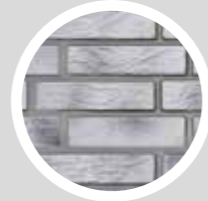


Ceramic texture - Pastel grey

# Brick texture



## Colours



NBII Flamed signal grey



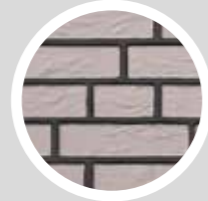
NBII Flamed red



NBII Red



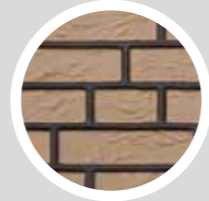
NBII Anthracite



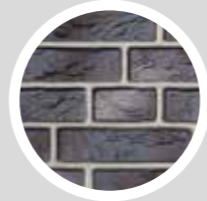
NBII White



NBII Flamed yellow



NBII Yellow



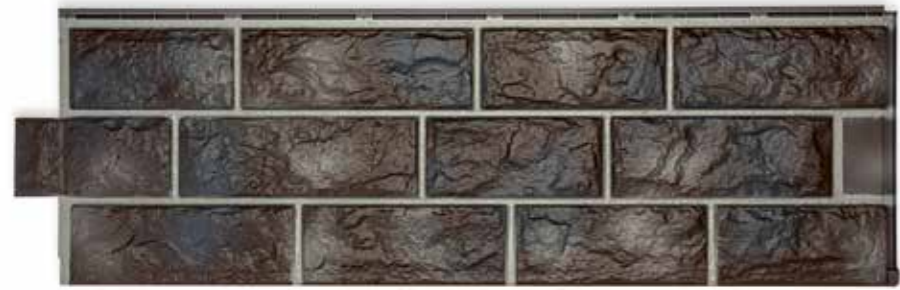
NBII Flamed anthracite

Brick texture as a north German facade design is still the classic in the Zierer product range. It has already been processed a million times in random bond under the NB II designation.

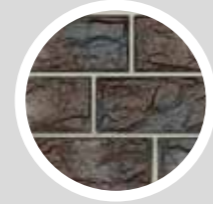


Brick texture - NBII Flamed red

# Natural stone texture



## Colours



Flamed brown



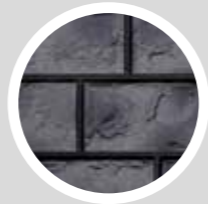
Flamed yellow



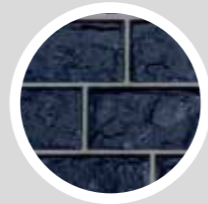
White



Flamed red



Flamed signal grey



Anthracite

The natural stone texture simulates a rough-hewn sandstone. Its appeal lies in its large format and depth of surface texture. The element has a harmonious effect in large areas or can be used to provide variation in the facade at plinth level.



Natural stone texture - Flamed yellow

## Rendered texture



### Colours



Beige



Pastel grey



White



Yellow

Installed as a ventilated cladding system, the ZF Zierer rendered texture is a sensible and maintenance-free alternative to an insulated rendered facade.

Available in many colours!



Rendered texture - beige

## Rounded slate texture



### Colours



Anthracite



Brown

Our rounded slate texture is an exact replica of a classic roof finish. Recommended for its quick and easy installation, it is hardly distinguishable from the original. It can be used as a roof edging, gable apex, for the entire house or in combination with our brick, natural stone or rendered facade panels.



Rounded slate texture – Anthracite

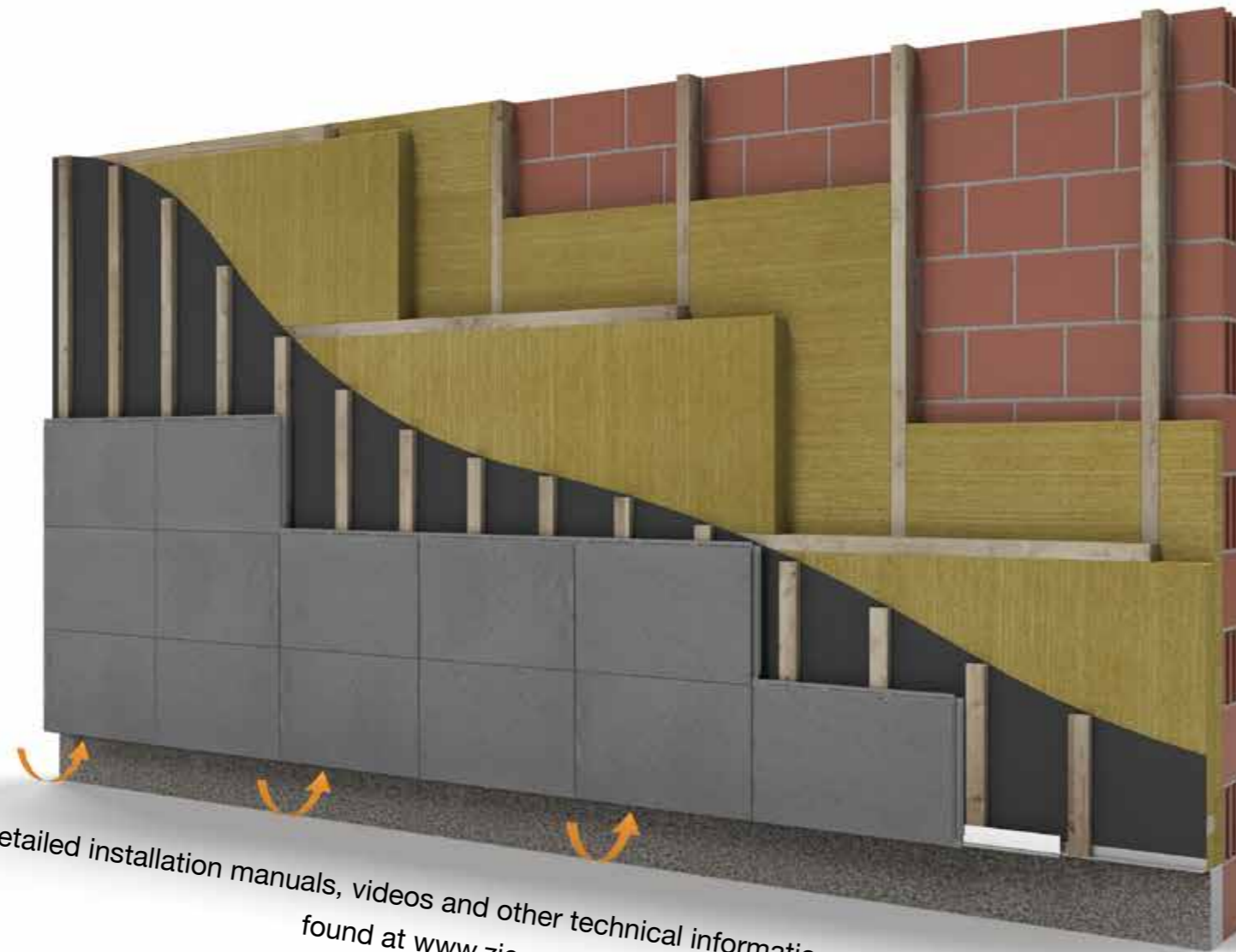
Design  
in form and colour  
fibreglas facade  
systems

Zierer facades are subject to  
strict quality controls!



**MPA NRW.**  
Materialprüfungsamt Nordrhein-Westfalen  
PRÜFEN • ÜBERWACHEN • ZERTIFIZIEREN







Gültig für die im Vertrag geregelten Produkte!  
Valid for the products covered by the agreement!



Detailed installation manuals, videos and other technical information can be  
found at [www.zierer.de](http://www.zierer.de)

**ZF ZIERER®**  
facade-systems  
robust durable versatile

## All the benefits of our facades at a glance

- Made in Germany  Made in Germany
- Up to 50 % energy savings 
- Varied appearance, great design and architectural possibilities
- Eco-friendly  
(low CO<sub>2</sub> emissions = low energy costs) 
- Easy and rapid installation
- Prevents mould growth 
- Ventilation and venting ensures an optimal indoor climate
- No soaking of insulation
- High quality composite plastic
- Hail-proof and impact-resistant in accordance with EN ISO 179
- Can be handled in all weather conditions
- Visually enhances your facade
- Permanent increase in the value of your property
- Corrosion-free
- Low-maintenance / easy to keep clean 
- Impervious to driving rain through locking system 



Closure system

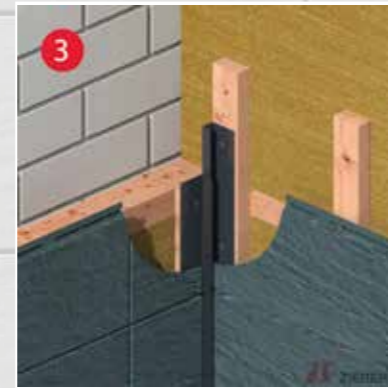
# Montageanleitung! mounting instruction!



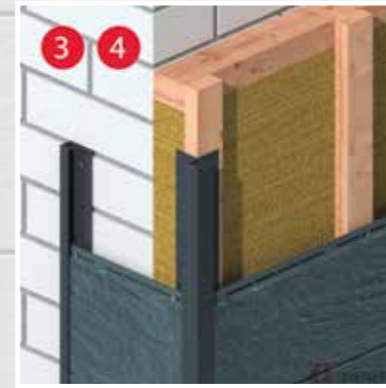
1  
Unterkonstruktion / Hinterlüftung  
substructure / ventilation



2  
Starterleiste / Lüftungswinkel  
starting profile / ventilation profile



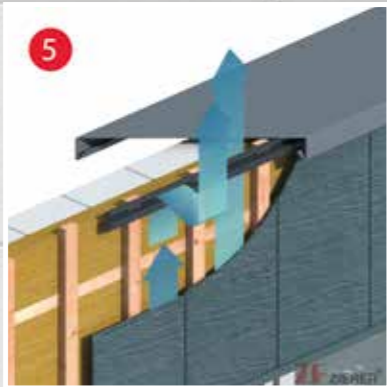
3  
Innenecke  
inner corner



3 4  
Außenecke / Abschluss-U-Profil  
corner / finish-u-profile



3 4  
Fenstereinfassung  
window-finish



5  
Oberer Abschluss  
upper-finish



Installation video

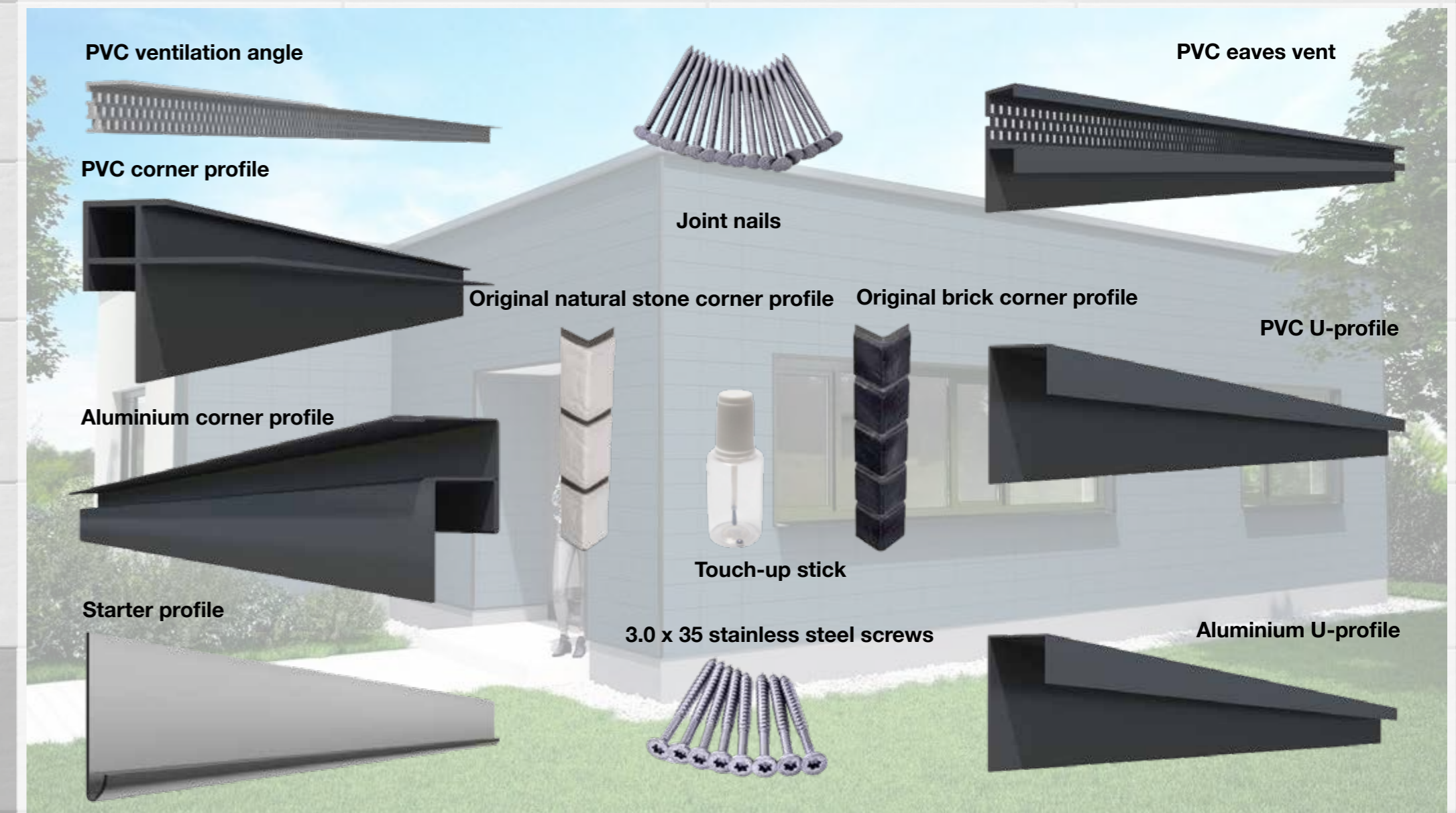


Diese Montageanleitung beinhaltet nur allgemeine Angaben zur Verarbeitung der ZIERER-Fassade, maßgeblich sind die örtlichen Gegebenheiten an der Baustelle, deshalb können aus den Angaben keine Rechtsansprüche abgeleitet werden. **Belüftung und Ausdehnung beachten! Dehnung pro Meter/pro°C 0,02 mm!**

These erection and fitting instructions represent general indications and are not individually definitive for the laying down of a ZF ZIERER Facade. Please be aware, that erection of the facade largely depends on local site conditions. Thus, no legal liability claims can be derived from these instructions. **Ventilation and expansion have to be observed! 0,02 mm expansion per metre/°C!**

ZF ZIERER®

## Accessories



PVC ventilation angle

PVC corner profile

PVC eaves vent

Joint nails

Original natural stone corner profile

Original brick corner profile

PVC U-profile

Aluminium corner profile

Touch-up stick

3.0 x 35 stainless steel screws

Starter profile

Aluminium U-profile

**ZF** ZIERER®  
facade-systems  
robust durable versatile



ZF Zierer Fassaden GmbH  
Hofkamp 20-22 · D-48599 Gronau

Phone: +49 (0) 25 65 / 44 71  
E-Mail: [info@zierer.de](mailto:info@zierer.de)  
[www.zierer.de](http://www.zierer.de)